



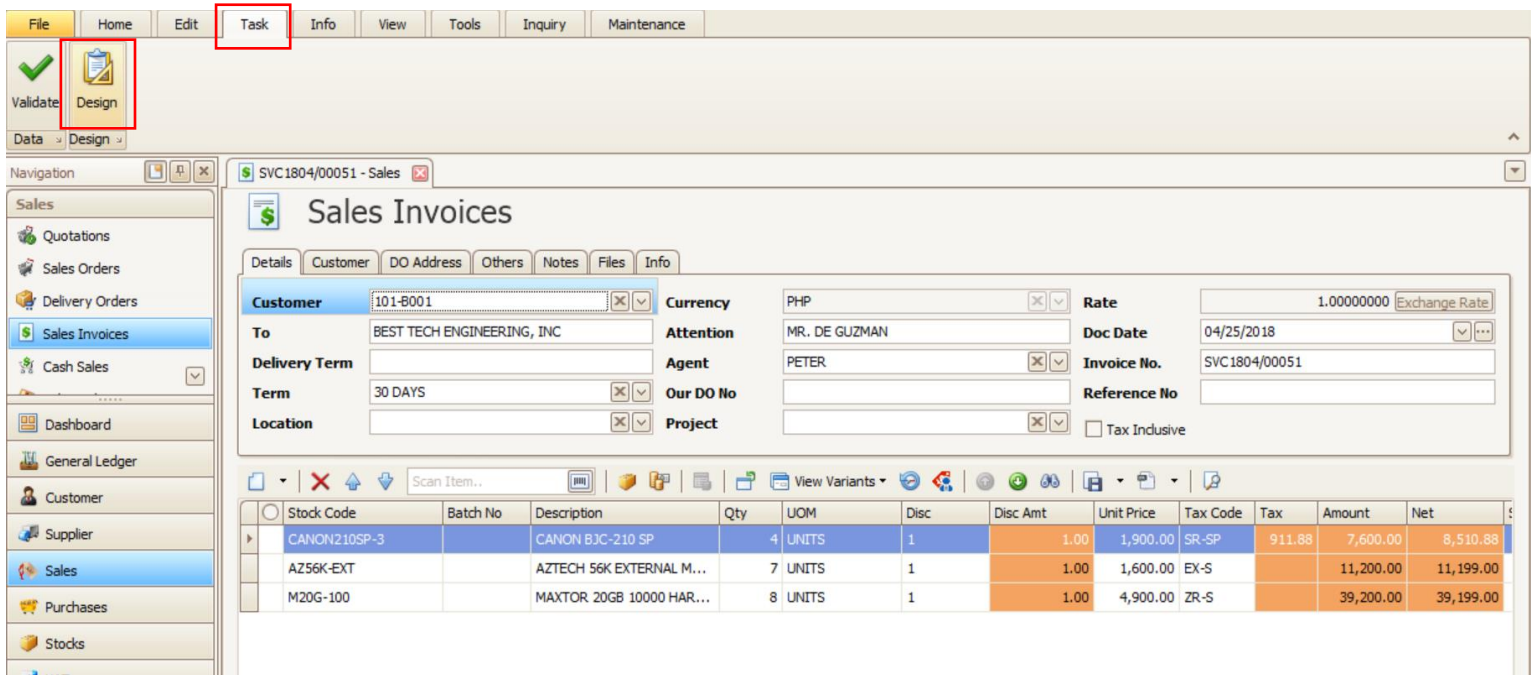
## HOW IMPORT/EXPORT .REPX FILE FORMAT

The REPX file type is primarily associated with 'XtraReports' by Developer Express Inc. It helps the end-user to create and maintain all the possibilities of the reporting solution. It contains information on a report's type name, all the property values, and all the property values of report bands and controls.

QNE Optimum integrate the use of. REPX file in all of its report generation allowing the end-user to modify, create, export and import such file as preferred.

**Note:** This feature is exclusive only to higher optimum package. Please contact QNE Support for more information.

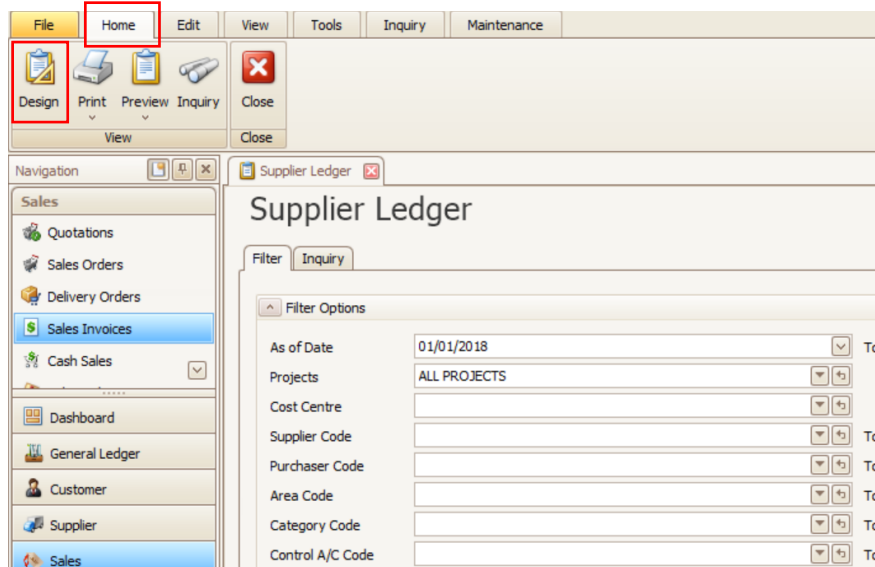
In a transaction form, go to Task menu and select Design.



The screenshot shows the 'Sales Invoices' form in the QNE Optimum application. The top navigation bar includes 'File', 'Home', 'Edit', 'Task', 'Info', 'View', 'Tools', 'Inquiry', and 'Maintenance'. The 'Task' menu is open, showing 'Validate' and 'Design' options. The 'Design' option is highlighted. The main form displays invoice details for 'SVC1804/00051 - Sales'. The form includes fields for Customer (101-B001), Currency (PHP), Rate (1.00000000), Doc Date (04/25/2018), Invoice No. (SVC1804/00051), and Reference No. (SVC1804/00051). The form also includes a table for invoice items.

Stock Code	Batch No	Description	Qty	UOM	Disc	Disc Amt	Unit Price	Tax Code	Tax	Amount	Net
CANON210SP-3		CANON BJC-210 SP	4	UNITS	1	1.00	1,900.00	SR-SP	911.88	7,600.00	8,510.88
AZ56K-EXT		AZTECH 56K EXTERNAL M...	7	UNITS	1	1.00	1,600.00	EX-S		11,200.00	11,199.00
M20G-100		MAXTOR 20GB 10000 HAR...	8	UNITS	1	1.00	4,900.00	ZR-S		39,200.00	39,199.00

In Reports, you can see the Design Tool in Home.

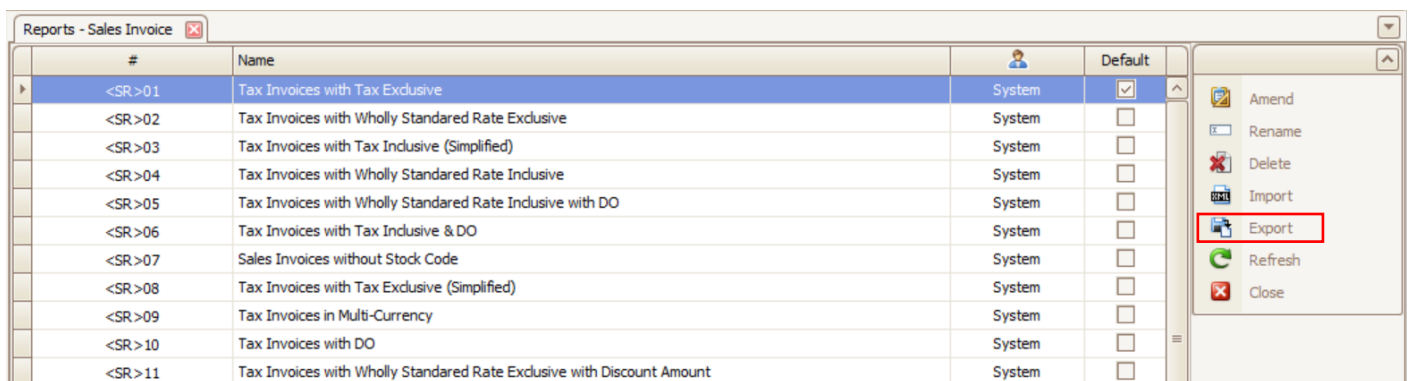


Once you open the Design, it will show you all the report/print format available in the certain transaction or report.

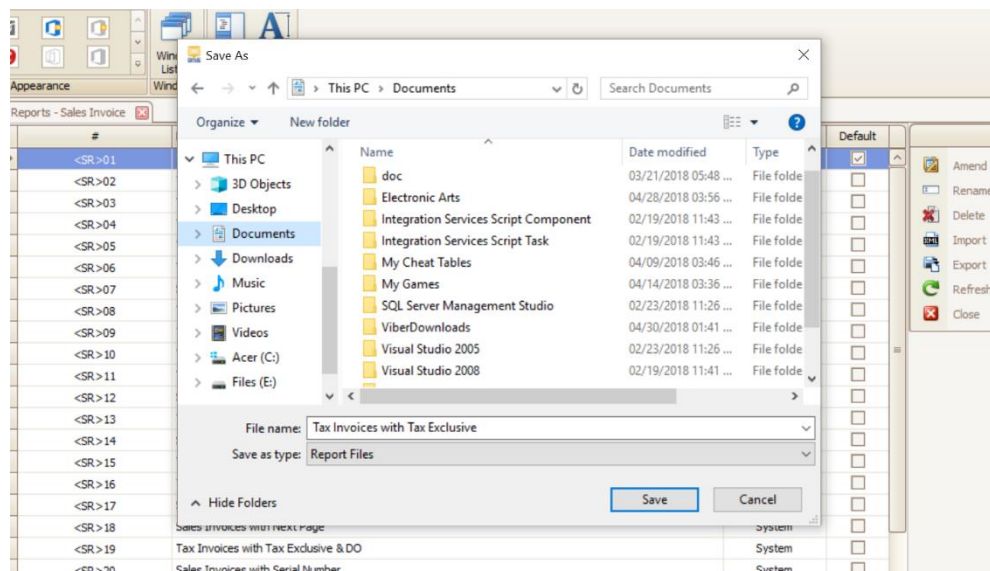
Reports - Sales Invoice				
#	Name		Default	
<SR>04	Tax Invoices with Wholly Standarded Rate Inclusive	System	<input type="checkbox"/>	
<SR>05	Tax Invoices with Wholly Standarded Rate Inclusive with DO	System	<input type="checkbox"/>	
<SR>06	Tax Invoices with Tax Inclusive & DO	System	<input type="checkbox"/>	
<SR>07	Sales Invoices without Stock Code	System	<input type="checkbox"/>	
<SR>08	Tax Invoices with Tax Exclusive (Simplified)	System	<input type="checkbox"/>	
<SR>09	Tax Invoices in Multi-Currency	System	<input type="checkbox"/>	
<SR>10	Tax Invoices with DO	System	<input type="checkbox"/>	
<SR>11	Tax Invoices with Wholly Standarded Rate Exclusive with Discount Amount	System	<input type="checkbox"/>	
<SR>12	Sales Invoices	System	<input type="checkbox"/>	
<SR>13	Tax Invoices with Tax Inclusive	System	<input type="checkbox"/>	
<SR>14	Sales Invoices with DO	System	<input type="checkbox"/>	
<SR>15	Tax Invoices with Wholly Standarded Rate Exclusive with DO	System	<input type="checkbox"/>	
<SR>16	Tax Invoices	System	<input type="checkbox"/>	
<SR>17	Sales Invoices with Auto-Numbering	System	<input type="checkbox"/>	
<SR>18	Sales Invoices with Next Page	System	<input type="checkbox"/>	
<SR>19	Tax Invoices with Tax Exclusive & DO	System	<input type="checkbox"/>	
<SR>20	Sales Invoices with Serial Number	System	<input type="checkbox"/>	
<SR>21	Tax Invoices (Legal Firm)	System	<input type="checkbox"/>	
<SR>22	Sales Invoices with Approvals	System	<input type="checkbox"/>	
<SR>23	Tax Invoices with Approvals	System	<input type="checkbox"/>	
<UDR>01	Tax Invoices with Tax Inclusive	ADMIN	<input type="checkbox"/>	
<SR>24	Sales Invoices With Journal Details	System	<input type="checkbox"/>	
<SR>25	Tax Invoices With Global Discount	System	<input type="checkbox"/>	
<UDR>02	Sales Invoices	ADMIN	<input type="checkbox"/>	

On the above screenshot, <SR> means that it is a system report generated format and deletion of it is not allowed. <UDR> means User Defined Report, it is the one in which it logged whose user amend and created the report format. You can provide your preferred name. Plus, you can set what report format you would like to be in default.

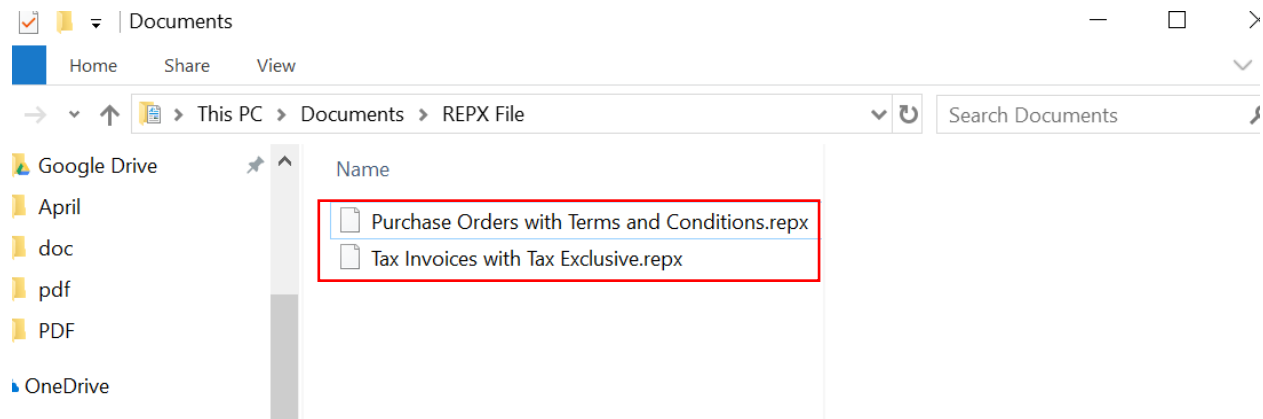
Select a report format and by using the option on the right side of the screen, you can find the export field.



Once you do export, it will show you also a default filename and a file type.



You can check the exported file. Repx file can only be imported and be opened in the report designer environment which QNE Optimum have.



You can import report file format with the. repx file type.

**NOTE:** Please do inform that import a respective .repx file to a specific transaction form/report form where it belong. Each report format .repx contains information and structure based on the transaction and module content.