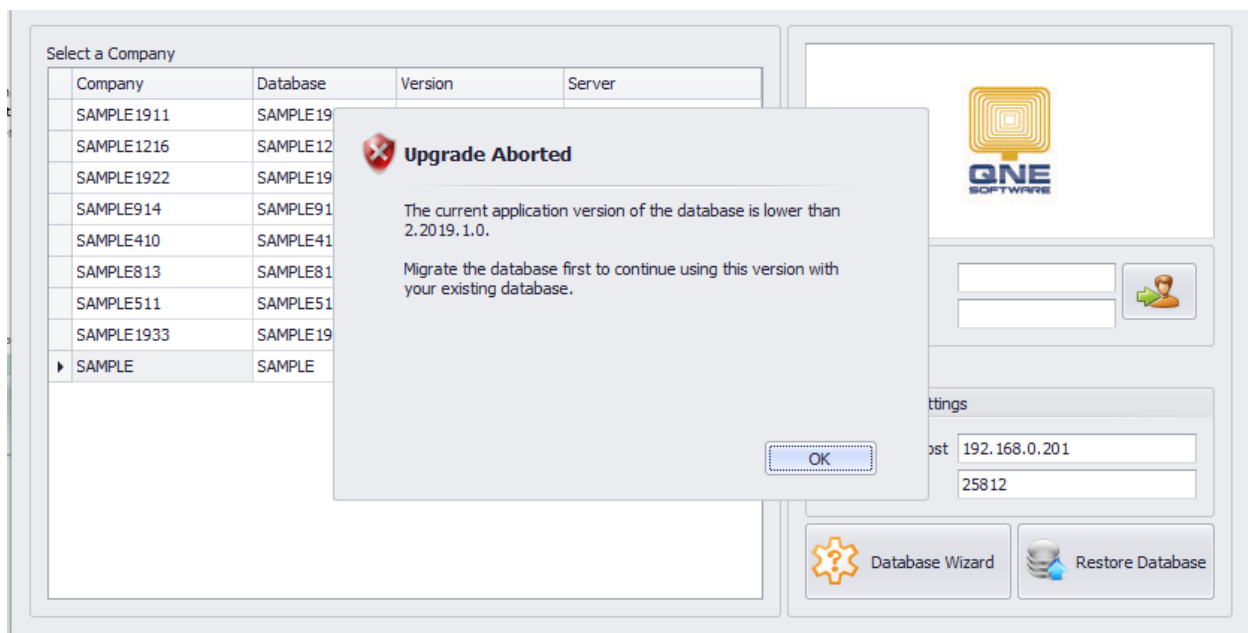




HOW TO MIGRATE AND UPGRADE DATABASE TO A NEW VERSION SERIES

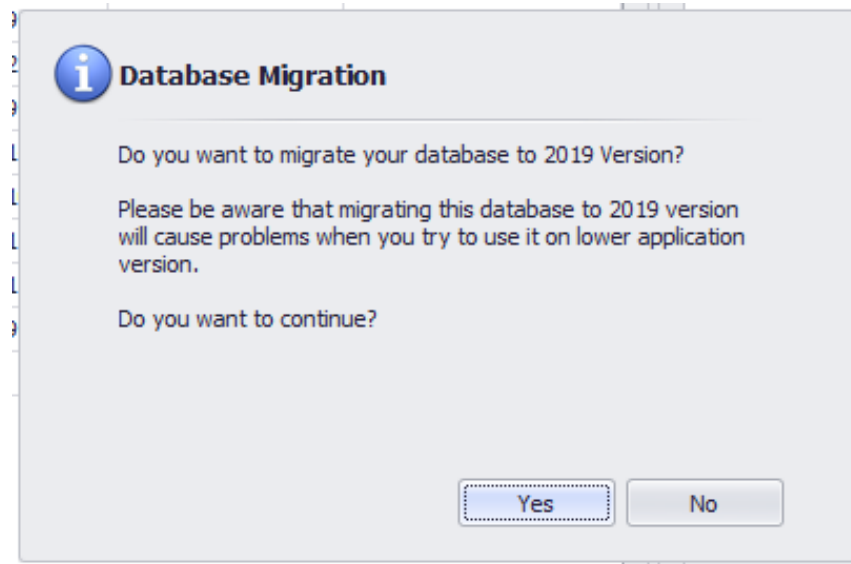
Problem Scenario:

User's Payroll System is for version update to fix bugs reported and to acquire enhancements in the latest version. Upon successful system version update, next is to upgrade the database. You may encounter the below screenshot when upgrading from current series to new version series (e.g. 2.2017.12.16 to 2.2019.3.3)

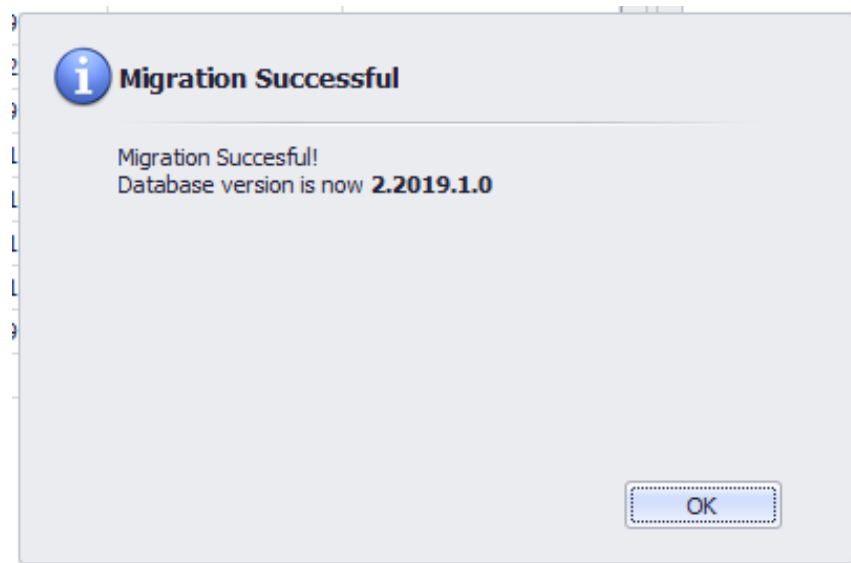


Resolution:

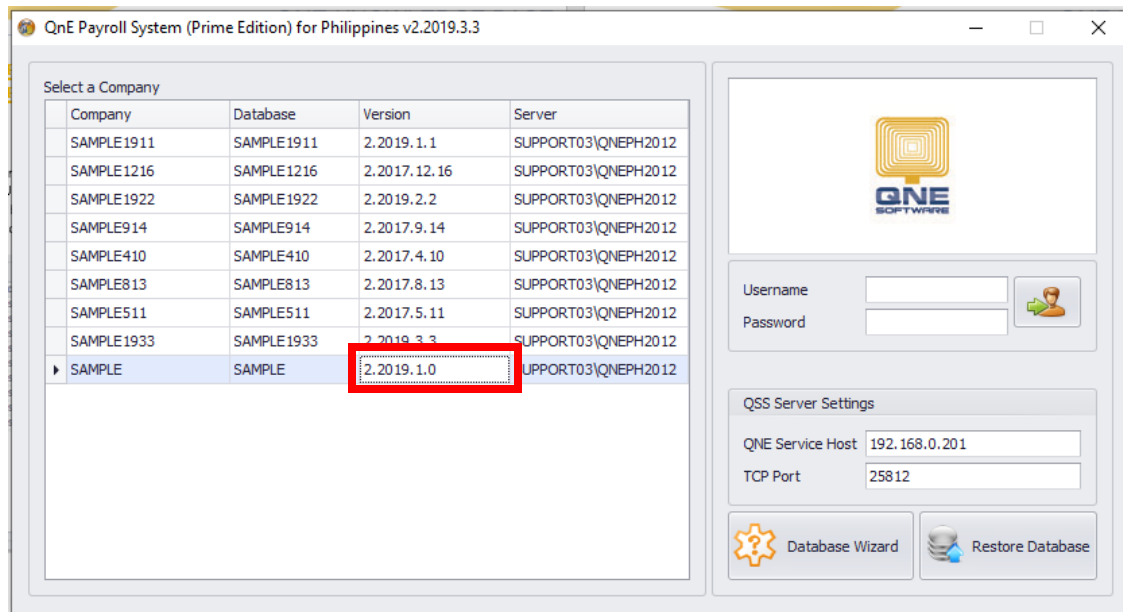
Press **CTRL + F11** to migrate the database version to a new version series. Below message will prompt.



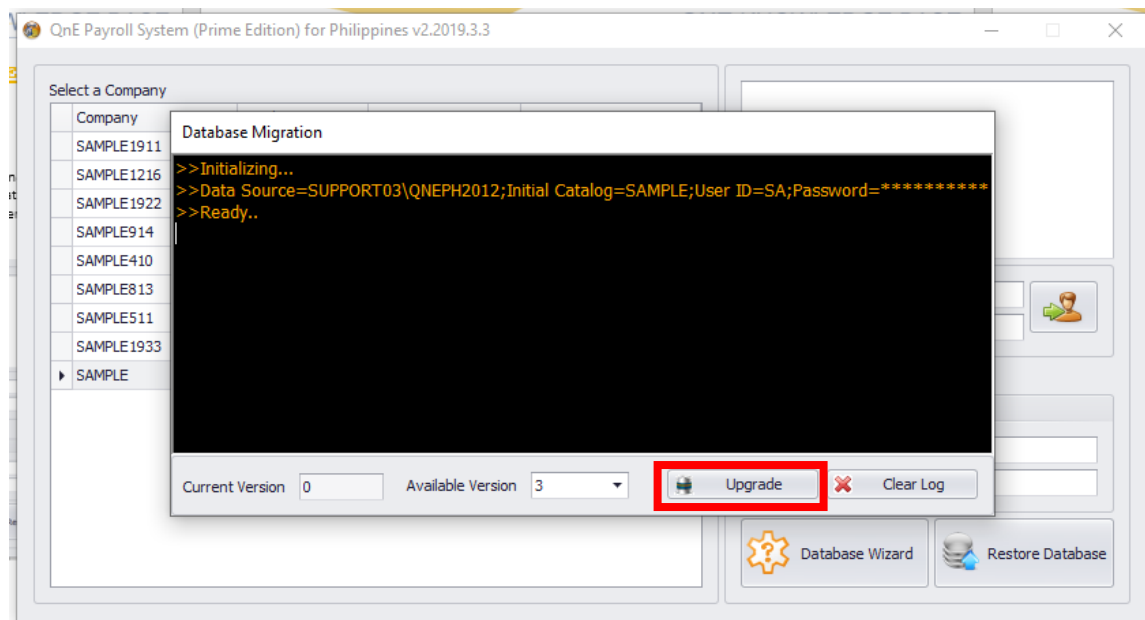
Just click **Yes**. Your database is now migrated to a new version series.

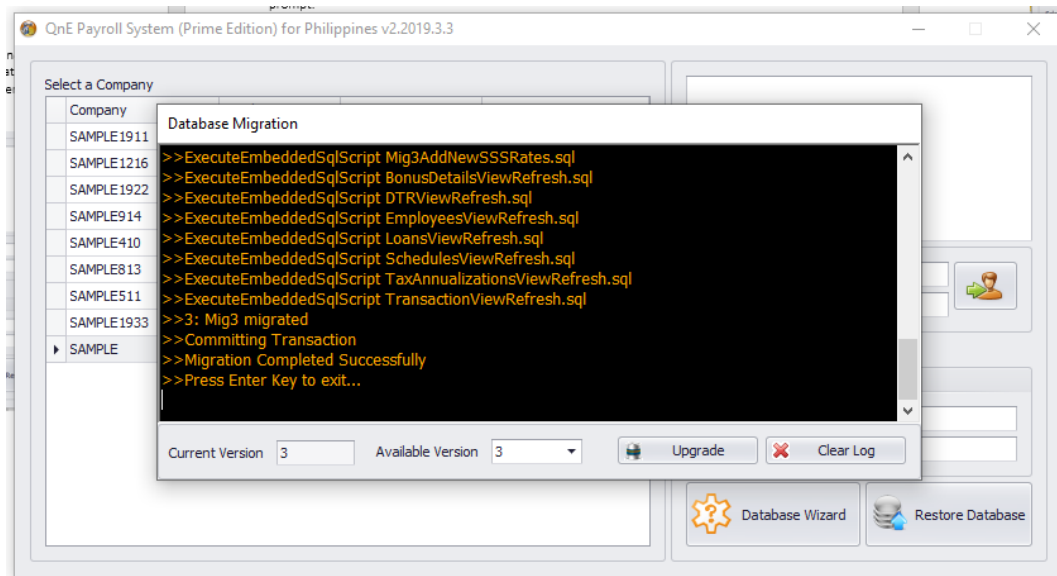


In Companies Wizard you will see that database version is 2019.1.0

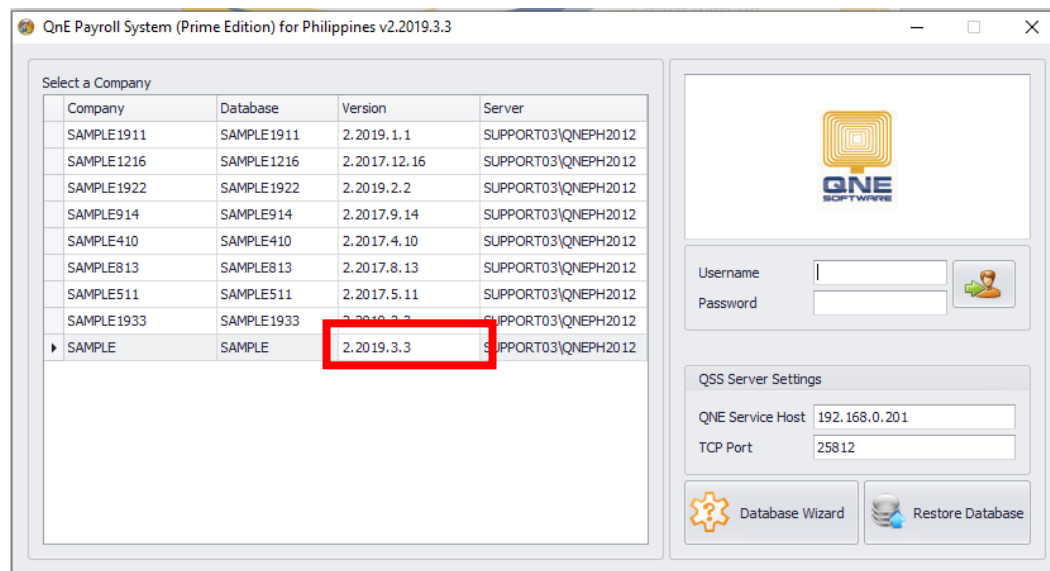


To continue the database upgrade, press **CTRL + U**. System will now ask you to backup your database before upgrading. After then, you may now proceed to database upgrade





Press Enter Key to exit and your database upgrade is now successful



NOTE:



For further concerns regarding this matter, please contact support to assist you or create ticket thru this link <https://qnesupportph.freshdesk.com>