

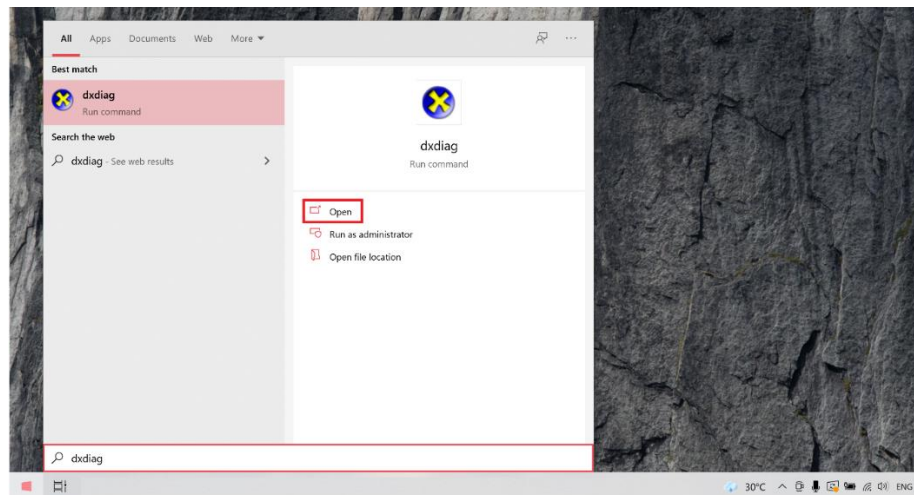


## How to install SQL Server 2012 Express in QNE OPTIMUM

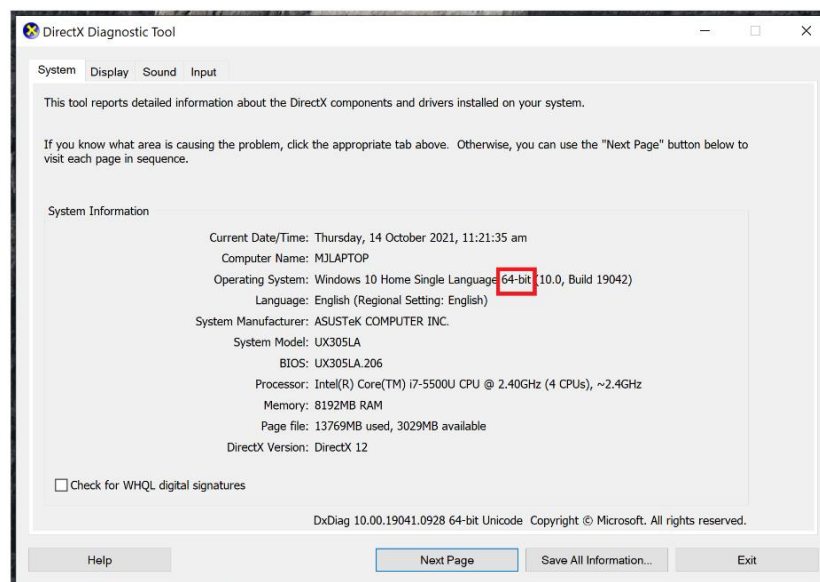
SQL Server 2012 Express is a version of Microsoft's SQL Server relational database management system and used in QNE Optimum Server.

1. Check what SQL Server Express is compatible on your computer

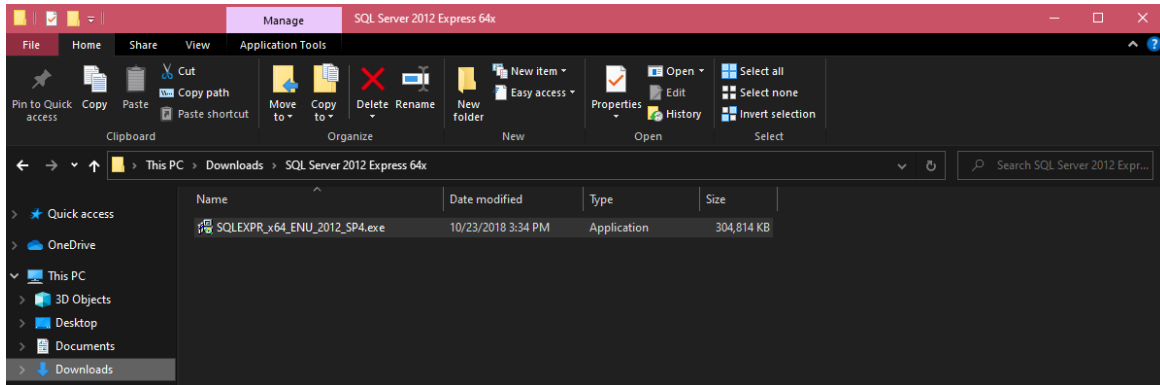
In Window Icon, Type or Search for **dxdiag** then click 'Open'



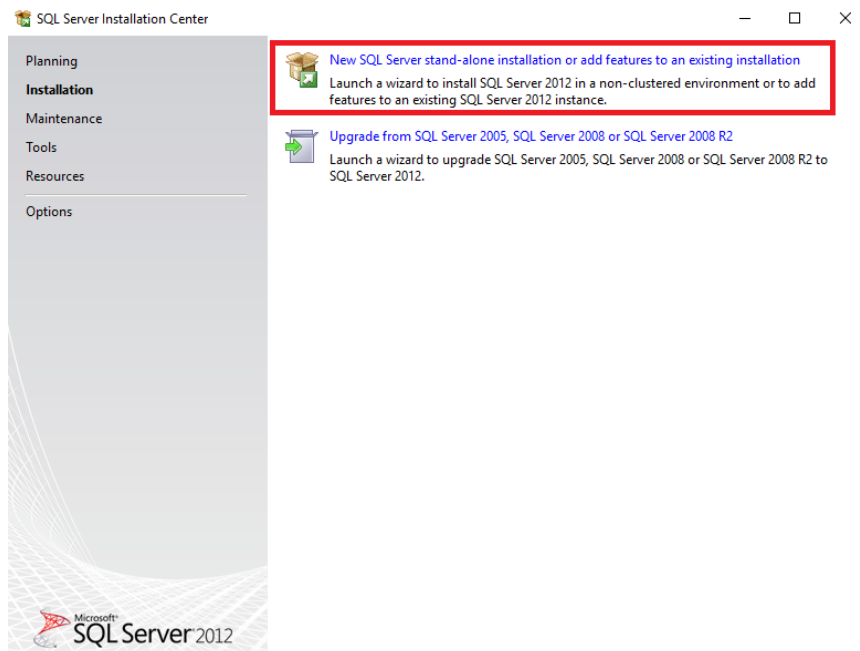
In DirectX Diagnostic Tool, Check if the installed Operating System is 64-bit or 32-bit.



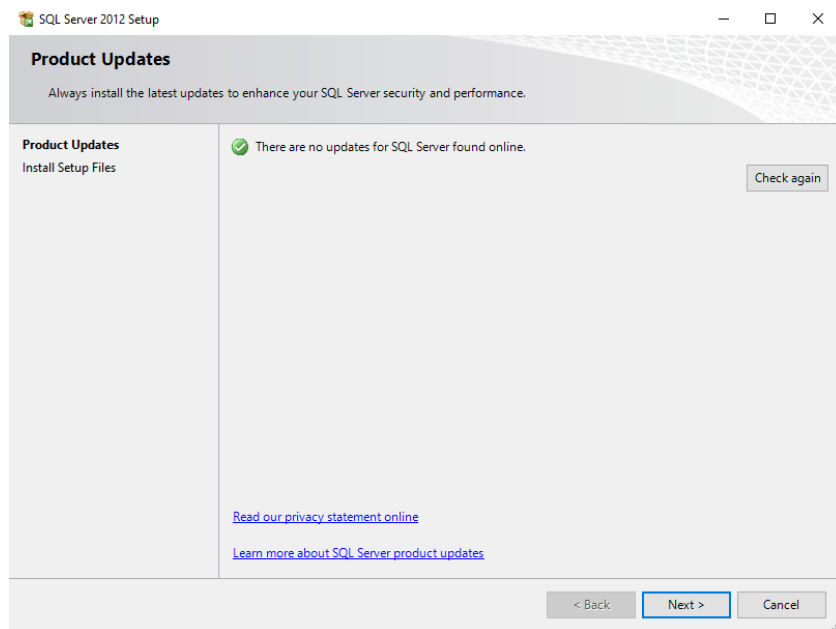
2. Download **SQL Server 2012 Express** (based on the compatible bit), refer to below Link:
  - SQL Server 2012 SP4 Express 64bit - <http://chilp.it/4f92a09>
  - SQL Server 2012 SP4 Express 32bit - <http://chilp.it/38c64a8>
3. To start the SQL Server 2012 Express Installation, Double-click the downloaded Installer:



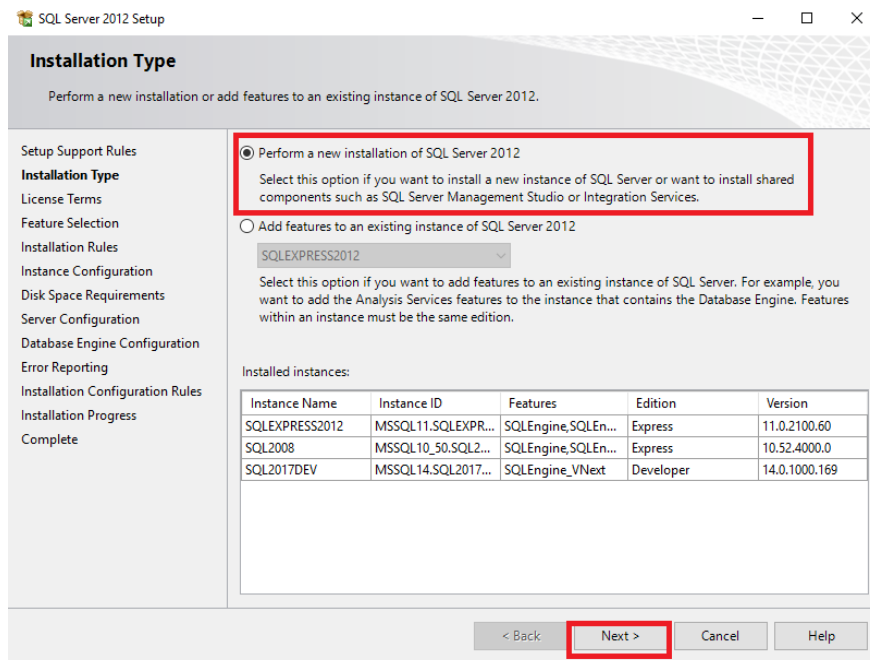
4. Click 'NEW SQL Server Stand-alone installation or add features to an existing installation'



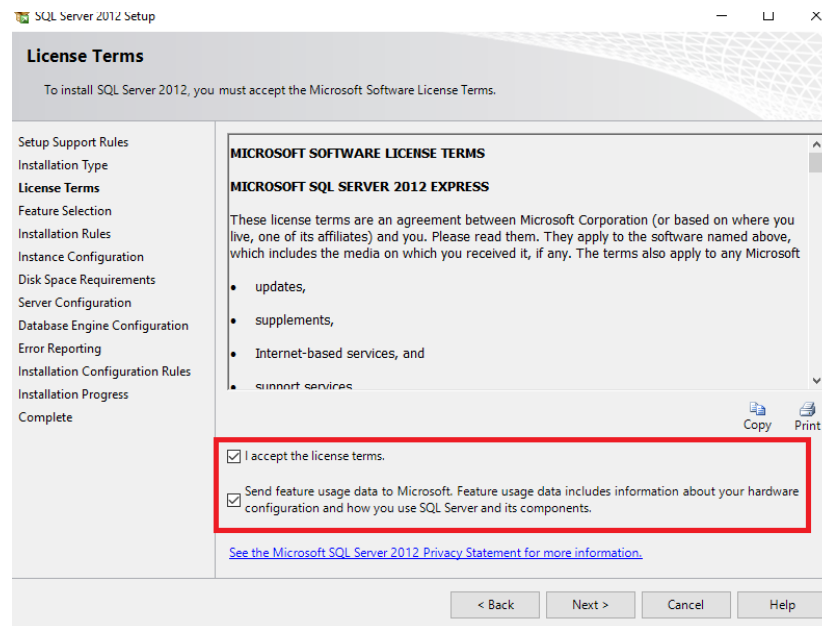
- Click Next, once update is done



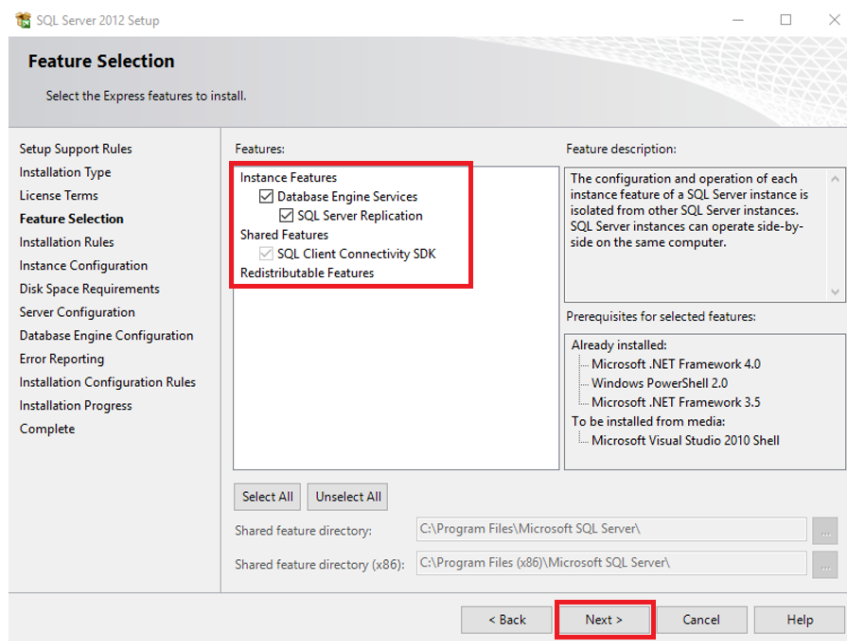
- Choose 'Perform a new Installation of SQL Server 2012' > Click Next



7. Ticked ✓ both option: I accept the license terms and Send features usage data to Microsoft > Click Next.



8. In Features Selection, make sure that all options under Instance Features are ticked ✓ > Click Next



9. Choose 'Named instance' and set to QNEBSS > Click Next

**SQL Server 2012 Setup**

**Instance Configuration**

Specify the name and instance ID for the instance of SQL Server. Instance ID becomes part of the installation path.

Setup Support Rules  
Installation Type  
License Terms  
Feature Selection  
Installation Rules  
**Instance Configuration**  
Disk Space Requirements  
Server Configuration  
Database Engine Configuration  
Error Reporting  
Installation Configuration Rules  
Installation Progress  
Complete

☐ Default instance  
☒ Named instance:

Instance ID:

Instance root directory:

SQL Server directory:

Installed instances:

Instance Name	Instance ID	Features	Edition	Version
SQLEXPRESS2012	MSSQL11.SQLEXPRESS	SQLEngine,SQLEn...	Express	11.0.2100.60
SQL2008	MSSQL10_50.SQL2008	SQLEngine,SQLEn...	Express	10.52.4000.0
SQL2017DEV	MSSQL14.SQL2017DEV	SQLEngine_VNext	Developer	14.0.1000.169

< Back **Next >** Cancel Help

10. Set the Startup Type to 'Automatic' for both Service > Click Next

**SQL Server 2012 Setup**

**Server Configuration**

Specify the service accounts and collation configuration.

Setup Support Rules  
Installation Type  
License Terms  
Feature Selection  
Installation Rules  
Instance Configuration  
Disk Space Requirements  
**Server Configuration**  
Database Engine Configuration  
Error Reporting  
Installation Configuration Rules  
Installation Progress  
Complete

Service Accounts Collation

Microsoft recommends that you use a separate account for each SQL Server service.

Service	Account Name	Password	Startup Type
SQL Server Database Engine	service\MSSQL\$QNEBSS		Automatic
SQL Server Browser	service\MSSQL\$QNEBSS		Automatic

< Back **Next >** Cancel Help

11. For the Authentication Mode, choose *Mixed Mode* > Insert Password **QnE123!@#** > Click Next

SQL Server 2012 Setup

### Database Engine Configuration

Specify Database Engine authentication security mode, administrators and data directories.

Setup Support Rules  
Installation Type  
License Terms  
Feature Selection  
Installation Rules  
Instance Configuration  
Disk Space Requirements  
Server Configuration  
**Database Engine Configuration**  
Error Reporting  
Installation Configuration Rules  
Installation Progress  
Complete

Server Configuration | Data Directories | User Instances | FILESTREAM

Specify the authentication mode and administrators for the Database Engine.

Authentication Mode

☐ Windows authentication mode

☒ Mixed Mode (SQL Server authentication and Windows authentication)

Specify the password for the SQL Server system administrator (sa) account.

Enter password: QnE123!@#

Confirm password: QnE123!@#

Specify SQL Server administrators

QNEINTERNAL\chengkahpoh (Cheng Kah Poh)

SQL Server administrators have unrestricted access to the Database Engine.

Add Current User Add... Remove

< Back Next > Cancel Help

12. Click Next again

SQL Server 2012 Setup

### Error Reporting

Help Microsoft improve SQL Server features and services.

Setup Support Rules  
Installation Type  
License Terms  
Feature Selection  
Installation Rules  
Instance Configuration  
Disk Space Requirements  
Server Configuration  
Database Engine Configuration  
**Error Reporting**  
Installation Configuration Rules  
Installation Progress  
Complete

Specify the information that you would like to automatically send to Microsoft to improve future releases of SQL Server. These settings are optional. Microsoft treats this information as confidential. Microsoft may provide updates through Microsoft Update to modify feature usage data. These updates might be downloaded and installed on your machine automatically, depending on your Automatic Update settings.

[See the Microsoft SQL Server 2012 Privacy Statement for more information.](#)

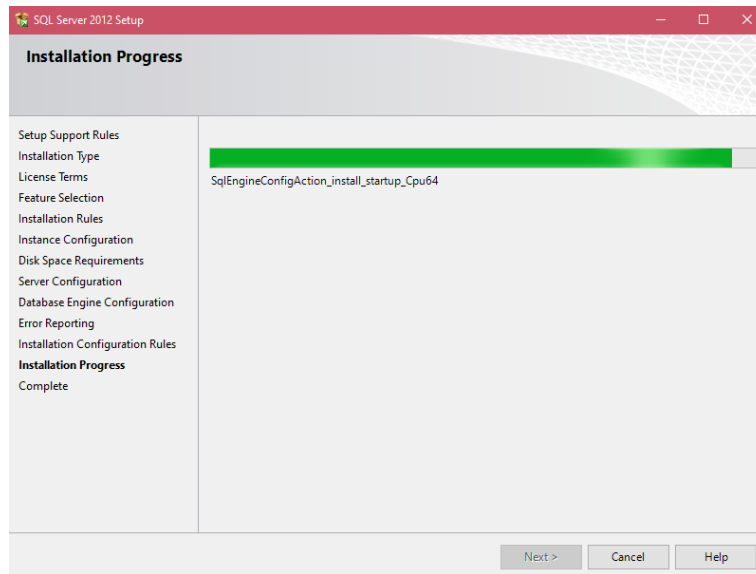
[Read more about Microsoft Update and Automatic Update.](#)

☐ Send Windows and SQL Server Error Reports to Microsoft or your corporate report server. This setting only applies to services that run without user interaction.

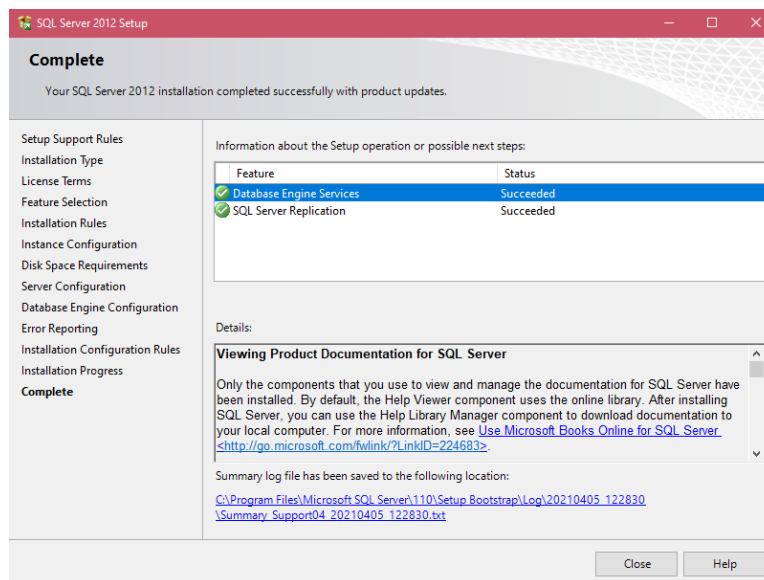
< Back Next > Cancel Help



13. Installation will Start, Next button will be enabled once fully loaded.



14. When both Features Status is Succeeded, SQL Installation is complete.



#### NOTE:



For further concerns regarding this matter, please contact support to assist you or create ticket thru this link <https://qnesupportph.freshdesk.com>